


DIGITAL LIBRARY CONTENT AND LICENSING

Nicole Harris, GÉANT



Learning Objective – Digital Library Content and Licensing



Understand how current library resources are being used by federations.

Have a grounding in the content that is already available via federations and how you can engage.

Learn some approaches to ensuring licensing compliance.

Understand some of the problem areas with publishers.

MET is your friend!

Most federated entities



Export ▾

EntityID	Type	Display Name	Federations	Number of Federations
http://shibboleth.ebscohost.com	SP	EBSCO Information Services	ACOnet Identity Federation (eduID.at) ArnesAAI Federation Australian Access Federation Belnet Federation CAF Federation CARSi Federation COFRe Federation DFN-AAI eduGAIN Edugate Federation eduID.cz eduID.hu Federation Fédération Éducation-Recherche GakuNin Federation Haka IDEM federation InCommon Federation PIONIER Federation RCTSaai Federation SIR Federation SWAMID Federation SWITCHaai Federation UK Access Management Federation FEDUrus Identity Federation	24
https://sp.tshhosting.com/shibboleth	SP	Web of Knowledge	ACOnet Identity Federation (eduID.at) ArnesAAI Federation Belnet Federation CAF Federation CARSi Federation COFRe Federation DFN-AAI eduGAIN Edugate Federation eduID.cz Fédération Éducation-Recherche GakuNin Federation IDEM federation InCommon Federation RCTSaai Federation SWAMID Federation SWITCHaai Federation Tuakiri Federation UK Access Management Federation FEDUrus Identity Federation	20
https://e5.onthehub.com	SP	e5.onthehub.com	ACOnet Identity Federation (eduID.at) ArnesAAI Federation Australian Access Federation Belnet Federation CAF Federation DFN-AAI eduGAIN Edugate Federation Fédération Éducation-Recherche GakuNin Federation GRNET Federation Haka IDEM federation InCommon Federation RCTSaai Federation SWAMID Federation SWITCHaai Federation Tuakiri Federation UK Access Management Federation	19

MET is your friend!

Federations summary

Total: 39

Export ▾

Name	Country	Entities	IDP	SP
AAI@eduHr Federation	Croatia	3	1	2
ACOnet Identity Federation (eduID.at)	Austria	146	42	105
ArnesAAI Federation	Slovenia	271	57	214
Australian Access Federation	Australia	253	52	196
Belnet Federation	Belgium	109	40	69
CAF Federation	Canada	110	39	71
CAFe Federation	Brazil	162	129	33
CARSI Federation	China	133	84	49
COFRe Federation	Chile	31	5	26
DFN-AAI	Germany	490	218	272
Edugate Federation	Ireland	147	42	105
eduID.cz	Czech Republic	284	73	210
eduID.hu Federation	Hungary	89	25	63


MET is your friend!

Metadata Explorer Tool

EBSCO Information Services

Information retrieved from federation:

Entity ID:	http://shibboleth.ebscohost.com
Entity type:	SP
Registration authority:	http://www.heanet.ie (since 11/10/2011)
Registration policy:	None
Federations:	ACOnet Identity Federation (eduID.at) ArnesAAI Federation Australian Access Federation Belnet Federation CAF Federation CARSI Federation COFRe Federation DFN-AAI eduGAIN Edugate Federation eduID.cz eduID.hu Federation Fédération Éducation-Recherche GakuNin Federation Haka IDEM federation InCommon Federation PIONIER Federation RCTSaaI Federation SIR Federation SWAMID Federation SWITCHaaI Federation UK Access Management Federation FEDUrus Identity Federation



Entity properties:

Display name:	EBSCOhost
Description:	As the leading database and eBook provider for libraries and other institutions more than 375 full-text and secondary research databases and more than 300,000 eBooks and audiobooks available via the EBSCOhost platform EBSCO provides unparalleled access to world-renowned content in all subject areas including magazine and journal articles available via EBSCOhost
Information URL:	No information provided.

Library Resources for Universities

JSTOR HOME SEARCH BROWSE MyJSTOR

STOR Login Help Contact Us About

Journals, primary sources, and now **BOOKS**

[Advanced Search](#)

★ You are not currently logged in through a participating institution or individual account. See the [login page](#) for more information.

Looking for the Beta Search? [Go here.](#)

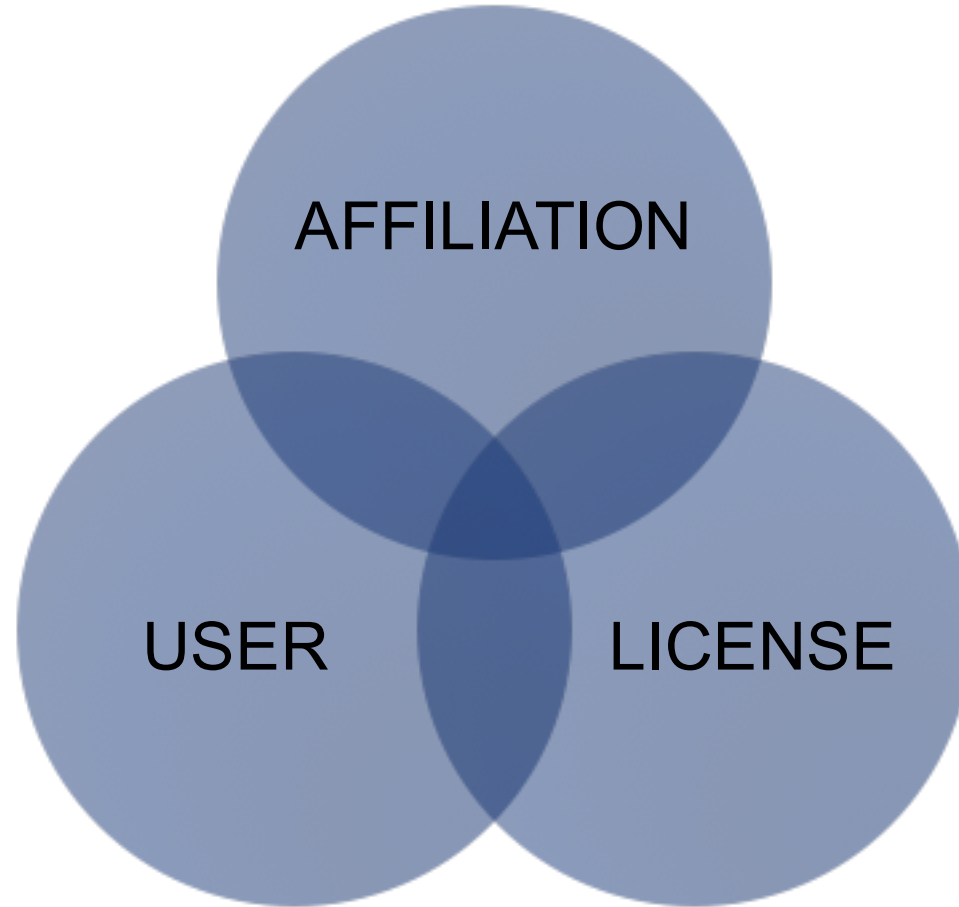
Library Resources for Schools



The image shows a grid of navigation buttons for the BrainPOP website. The grid is organized as follows:

- Row 1:** BrainPOP logo, SCIENCE (with atom icon), and a large featured banner for Slavery.
- Row 2:** BRAINPOP EDUCATORS (with FREE tag and microscope icon), SOCIAL STUDIES (with handshake and globe icons), and the Slavery banner.
- Row 3:** TOUR (with play button icon), ENGLISH (with book icon), and the Slavery banner.
- Row 4:** MATH (with calculator icon), FREE STUFF (with heart icon), GAMEUP (with game controller icon), TOP MOVIES (with star icon), and SLAVERY (with chains icon, marked as FEATURED).
- Row 5:** STANDARDS (with checkmark icon), ENGINEERING & TECH (with gear icon), SPOTLIGHT: ANIMALS (with dog icon), SPOTLIGHT: COOL TECH (with factory icon), BrainPOP Jr. (with K-3 tag and girl icon), and a girl character icon.
- Row 6:** HELP (with question mark icon), HEALTH (with lungs and person icon), a boy and girl character illustration, and BrainPOP Est. (with globe icon).
- Row 7:** ABOUT US (with atom icon), ARTS & MUSIC (with film reel and palette icons), the boy and girl character illustration, and SUBSCRIBE (with shopping cart icon).

Why is it a good fit?



Licensing – Jisc Collections

“provide access to the Material by UK Access Management Federation for Education and Research compliant technologies as a member of /and to join the UK Access Management Federation for Education and Research, subject to securing any necessary permissions, licences or consents (including, without limitation, any necessary permissions, licences or consents in respect of Intellectual Property Rights).”

Issues - Discovery

The screenshot shows the ScienceDirect website interface. At the top, there are promotional banners for ScienceDirect ArticleChoice, Elsevier, and a 45% discount on article bundles. Below these is a navigation bar with 'Books', 'Shopping cart', 'Sign in', and 'Help' links. A search bar is visible on the left. A modal window is open for signing in, with fields for 'Username' and 'Password', a 'Remember me' checkbox, and a 'Sign in' button. To the right of the modal, there are links for 'OpenAthens login', 'Login via your institution', and 'Other institution login'. Below the modal, a list of subject categories is visible, including 'Health Sciences', 'Business, management and Accounting', 'Decision Sciences', and 'Economics, Econometrics and Finance'. A 'Browse all titles' link is also present.

Login via your institution

You may be able to login to ScienceDirect using your institution's login credentials. [Learn more](#)
We will remember your login preference the next time you access ScienceDirect from this computer.

- Select your region or group
- ACOnet Identity Federation (Austria)
- Arnes AAI (Slovenia)
- Australian Access Federation (AAF)
- Belnet R&E Federation (Belgium)
- CAFe Federated Academic Community - Brazil
- COBISS AAI Federation
- COFRre - Comunidad Federada REUNA (Chile)
- Canadian Access Federation
- China CERNET Federation (CARSI)
- China CSTCloud Federation
- Corporate Customers
- Croatian Research and Education Federation - AAI@EduHr
- Czech Academic Identify Federation (eduID.cz)**
- Danish Universities and Higher Education (WAYF)
- Dayton IT Test Federation
- Dutch Universities
- French universities and grandes ecoles (RENATER)
- German Higher Education & Research (DFN-AAI)
- HEAL-Link(aai) (Greece)

[View All Institutions](#)

name from the results below to login.

Go

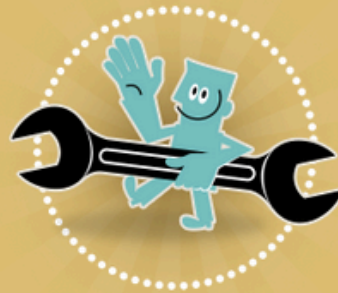
discovery.refeds.org

REFEDS DISCOVERY GUIDE

REFEDS demonstrates the most effective way to present federated identity to users of your site, with best practice and examples of how to provide the best experience.

BEST PRACTICE GUIDE

In just 4 simple steps you can learn the key recommendations from the NISO ESPRESSO report and find out how to implement federated login in a way which protects your brand, improves user satisfaction, and increases successful logins.



[VIEW THE BEST PRACTICE GUIDE](#)

DISCOVERY DEMO

See a guided demo of how to implement the best practice guide with visual demonstrations of how to, and how not to, use federated login effectively.



[VIEW THE DISCOVERY DEMOS](#)

Drivers?

- EIFL: <http://www.eifl.net/>.
- Research 4 Life: <http://www.research4life.org/>.